

# KING'S ROAD PARK

LONDON SW 6

*The Charlton*  
*1 bedroom apartment*

**APARTMENT G1.4.0.01**



Computer generated image of King's Road Park, indicative only.

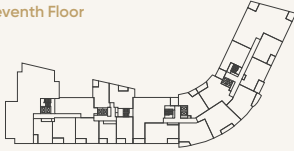
# The Charlton

## 1 bedroom apartment

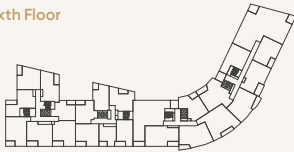
### APARTMENT G1.4.0.01

TOTAL AREA 62.5 SQ M 672.5 SQ FT

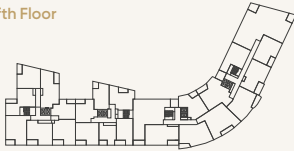
Seventh Floor



Sixth Floor



Fifth Floor



Fourth Floor



Third Floor



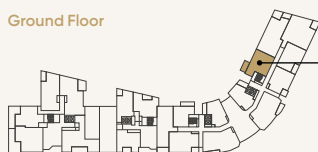
Second Floor



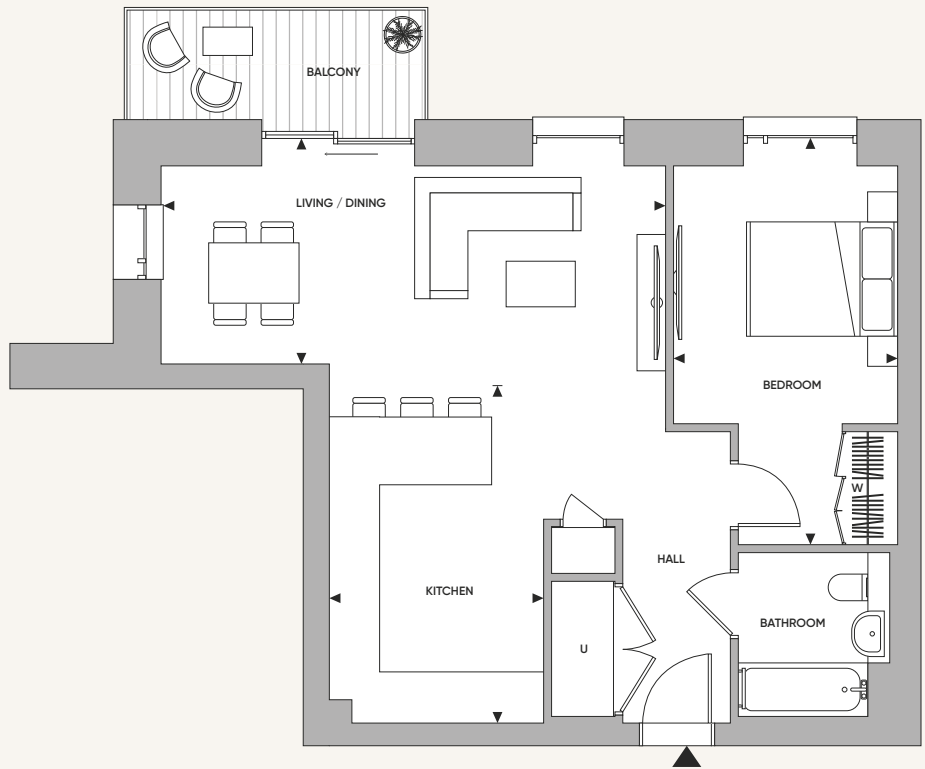
First Floor



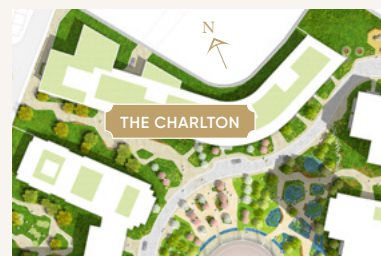
Ground Floor



G1.4.0.01



#### SITE PLAN



#### ROOM DIMENSIONS

Kitchen	2.81m x 4.45m	9' 3" x 14' 7"
Living / Dining	6.65m x 2.86m	21' 10" x 9' 5"
Bedroom	3.01m x 5.30m	9' 11" x 17' 5"
Balcony	5.9 sq m	63.3 sq ft

#### KEY

◀▶ Measurement Points W Wardrobe C Cupboard U Utility Cupboard OW Optional Wardrobe

Floorplans shown for King's Road Park are for approximate measurements only. Exact layouts and sizes may vary. All measurements may vary within a tolerance of 5%. The dimensions are not intended to be used for carpet sizes, appliance sizes or items of furniture. Floorplans have been sized to fit the page, as a result this plan may not be at the same scale as plans in other inserts. Apartment styles may vary within a set colour palette, please ask the sales representative for more detail. To discuss the location of the boiler please speak to your Customer Relations Manager. King's Road Park is a marketing name and will not necessarily form part of the approved postal address. Applicants are advised to contact St William to ascertain the availability of any particular property. Computer generated image of King's Road is indicative only. Issue Date: October 2022.

# KING'S ROAD PARK

LONDON SW6

*The Charlton*  
*1 bedroom apartment*

**APARTMENT G1.4.1.01**



Computer generated image of King's Road Park, indicative only.

# The Charlton

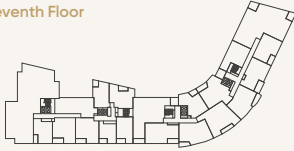
## 1 bedroom apartment



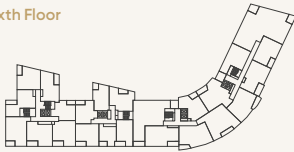
### APARTMENT G1.4.1.01

TOTAL AREA                      62.9 SQ M                      676.7 SQ FT

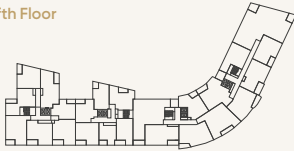
Seventh Floor



Sixth Floor



Fifth Floor



Fourth Floor



Third Floor



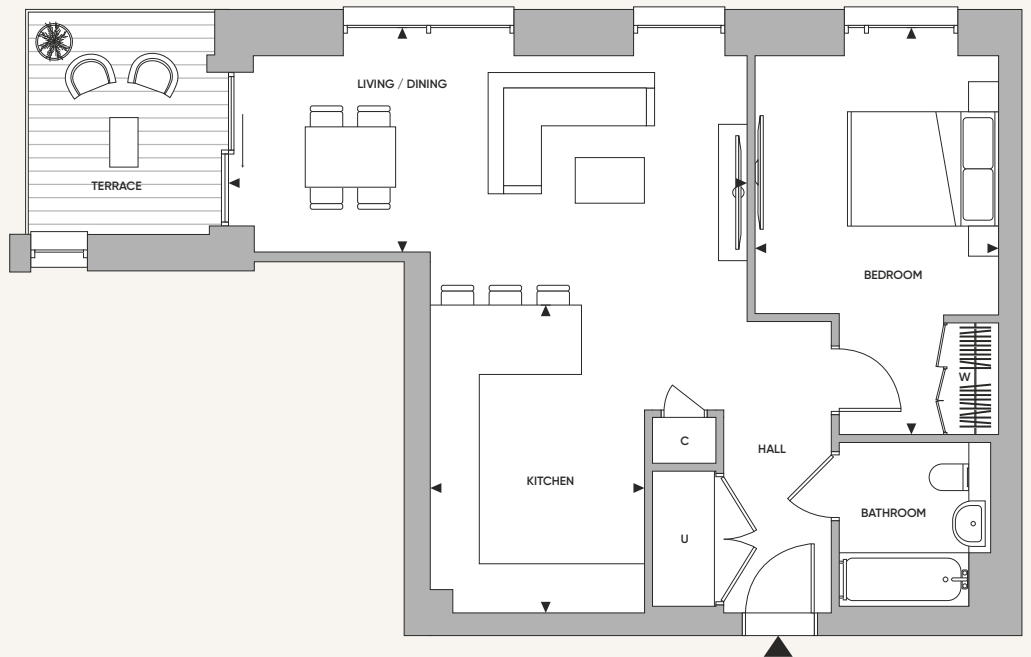
Second Floor



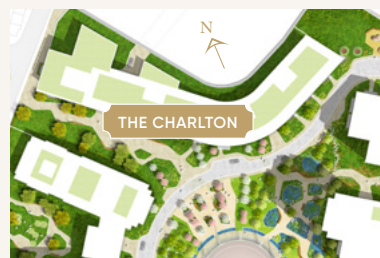
First Floor



Ground Floor



#### SITE PLAN



#### ROOM DIMENSIONS

Kitchen	2.80m x 4.01m	9' 2" x 13' 2"
Living / Dining	6.73m x 2.90m	22' 1" x 9' 6"
Bedroom	3.23m x 5.30m	10' 7" x 17' 5"
Balcony	7.0 sq m	74.9 sq ft

#### KEY

◀▶ Measurement Points    W Wardrobe    C Cupboard    U Utility Cupboard    OW Optional Wardrobe

Floorplans shown for King's Road Park are for approximate measurements only. Exact layouts and sizes may vary. All measurements may vary within a tolerance of 5%. The dimensions are not intended to be used for carpet sizes, appliance sizes or items of furniture. Floorplans have been sized to fit the page, as a result this plan may not be at the same scale as plans in other inserts. Apartment styles may vary within a set colour palette, please ask the sales representative for more detail. To discuss the location of the boiler please speak to your Customer Relations Manager. King's Road Park is a marketing name and will not necessarily form part of the approved postal address. Applicants are advised to contact St William to ascertain the availability of any particular property. Computer generated image of King's Road is indicative only. Issue Date: October 2022.

# KING'S ROAD PARK

LONDON SW 6

*The Charlton*  
*1 bedroom apartment*

**APARTMENTS G1.4.2.01, G1.4.3.01, G1.4.4.01,  
G1.4.5.01, G1.4.6.01 & G1.4.7.01**



Computer generated image of King's Road Park, indicative only.

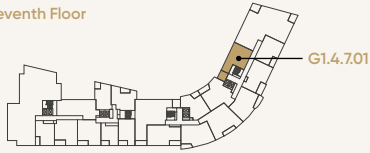
# The Charlton

## 1 bedroom apartment

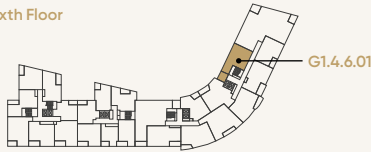
**APARTMENTS G1.4.2.01, G1.4.3.01, G1.4.4.01, G1.4.5.01, G1.4.6.01 & G1.4.7.01**

TOTAL AREA 66.5 SQ M 716.2 SQ FT

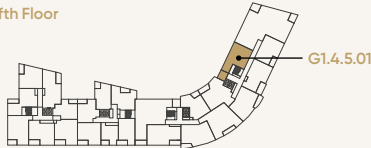
Seventh Floor



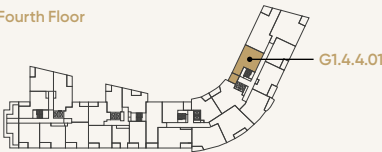
Sixth Floor



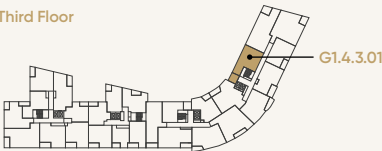
Fifth Floor



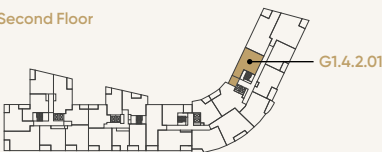
Fourth Floor



Third Floor



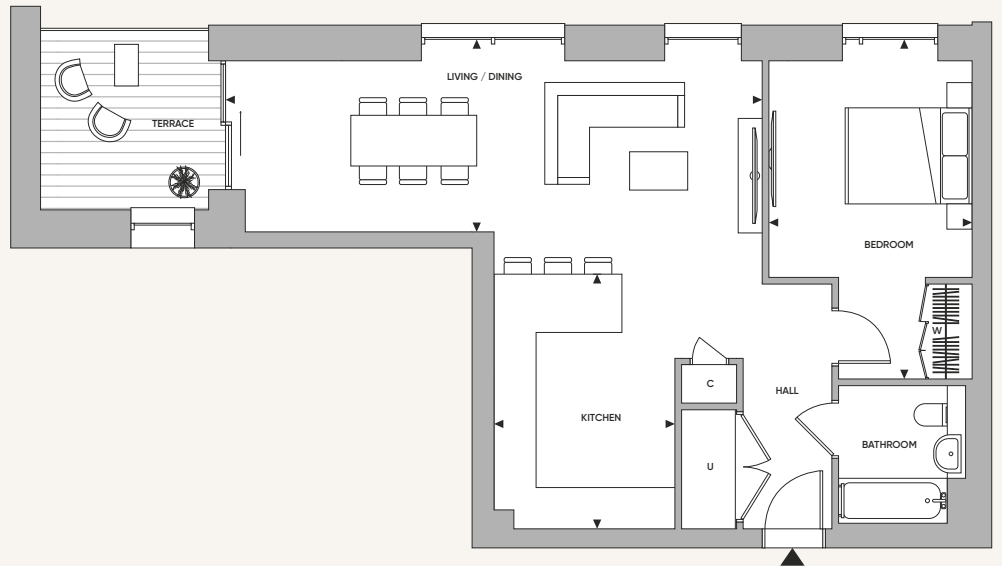
Second Floor



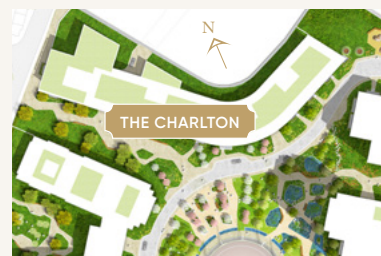
First Floor



Ground Floor



SITE PLAN



ROOM DIMENSIONS

Kitchen	2.81m x 4.01m	9' 3" x 13' 2"
Living / Dining	8.33m x 2.87m	27' 4" x 9' 5"
Bedroom	3.20m x 5.25m	10' 6" x 17' 3"
Balcony	7.5 sq m	80.3 sq ft

### KEY

◀▶ Measurement Points W Wardrobe C Cupboard U Utility Cupboard OW Optional Wardrobe

Floorplans shown for King's Road Park are for approximate measurements only. Exact layouts and sizes may vary. All measurements may vary within a tolerance of 5%. The dimensions are not intended to be used for carpet sizes, appliance sizes or items of furniture. Floorplans have been sized to fit the page, as a result this plan may not be at the same scale as plans in other inserts. Apartment styles may vary within a set colour palette, please ask the sales representative for more detail. To discuss the location of the boiler please speak to your Customer Relations Manager. King's Road Park is a marketing name and will not necessarily form part of the approved postal address. Applicants are advised to contact St William to ascertain the availability of any particular property. Computer generated image of King's Road is indicative only. Issue Date: October 2022.